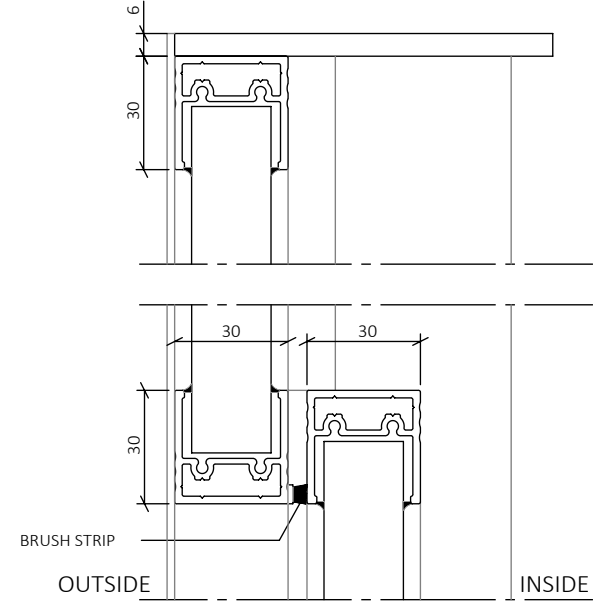


SCALE 1:20



EXPLANATIONS

ELECTRICALLY OPERATED SLIDING WINDOW, ERGOSAFE V100 2-PANEL. WINDOW OPENS VERTICALLY. NON-INSULATED, INTENDED FOR INDOOR USE. ALL DIMENSIONS GIVEN IN MILLIMETERS.

WALL OPENING, WIDTH: FOD+ 10 MM  
WALL OPENING, HIGHT: FOD+ 5 MM

OPERATION

WINDOW IS EQUIPPED WITH ELECTRIC LOCK AND IMPULSE CONTROL WITH SAFETY BUFFERS. AUTOMATIC LOCK IN CLOSED POSITION. MOTOR AND DRIVE ARE INTEGRATED IN THE WINDOW DESIGN. CONNECTS TO 230 V WALL OUTLET. POWER ADAPTER AND PUSH BUTTON KEYPAD WITH 2 METER CORD INCLUDED.

SURFACE FINISH

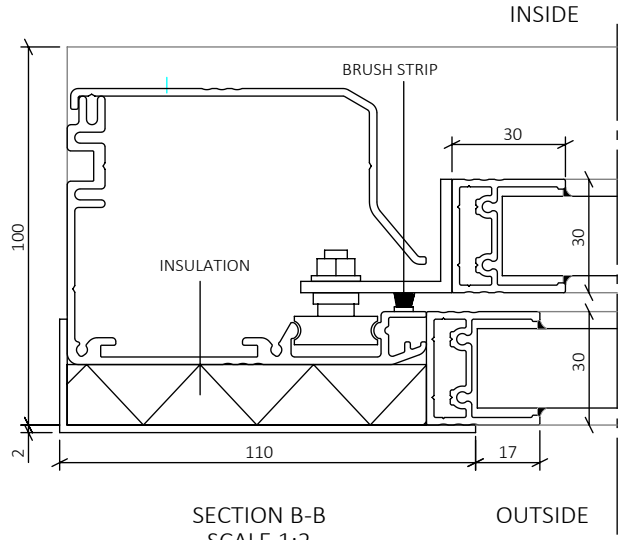
NATURAL ANODIZED ALUMINIUM AS STANDARD. CAN BE PAINTED OR ANODIZED IN OTHER COLOURS (RAL/NCS).

GLASS

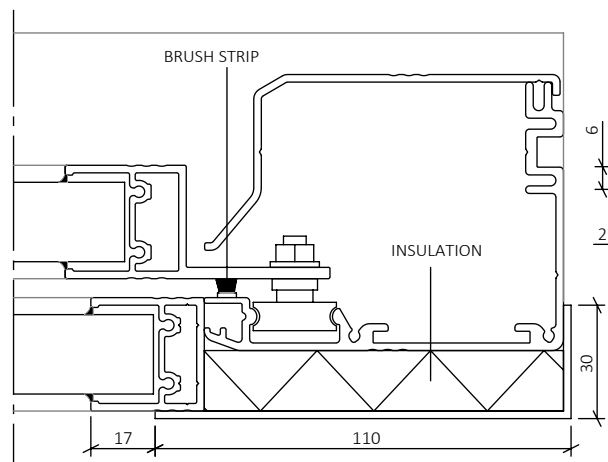
D4-12 TEMPERED INSULATING GLASS AS STANDARD (SAFETY GLASS). CUSTOMIZED UP TO 24 MM THICKNESS, DEPENDING ON LOCATION AND REQUIREMENTS.

OPTIONS

AVAILABLE IN DIFFERENT DESIGNS AND IN MANUAL VERSION. PLEASE CONTACT ERGOSAFE FOR FURTHER INFORMATION.



SECTION B-B  
SCALE 1:2



SECTION A-A  
SCALE 1:2



www.ergosafe.se

Category ELECTRICALLY OPERATED SLIDING WINDOW	Date 2023-10-30
Description V100 2-PANEL	Scale 1:2 (A4)
Drawn By EI	Drawing number 20060-0002
	Rev -