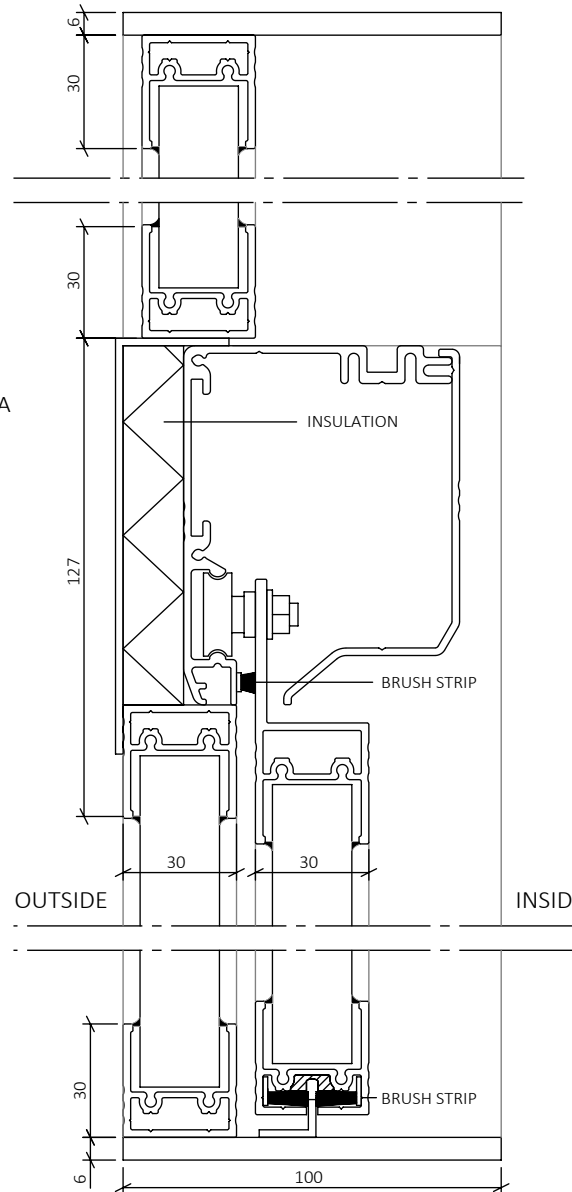


SECTION A-A
SCALE 1:2



EXPLANATIONS

ELECTRICALLY OPERATED SLIDING WINDOW, ERGOSAFE H100 2-PANEL TRANSOM WINDOW. WINDOW OPENS HORIZONTALLY. DESIGNED FOR USE IN CLIMATE BOUNDARIES. ALL DIMENSIONS GIVEN IN MILLIMETERS.

WALL OPENING, WIDTH: FOD+ 10 MM
WALL OPENING, HEIGHT: FOD+ 5 MM

OPERATION

WINDOW IS EQUIPPED WITH ELECTRIC LOCK AND IMPULSE CONTROL WITH SAFETY BUFFERS. AUTOMATIC LOCK IN CLOSED POSITION. MOTOR AND DRIVE ARE INTEGRATED IN THE WINDOW DESIGN. CONNECTS TO 230 V WALL OUTLET. POWER ADAPTER AND PUSH BUTTON KEYPAD WITH 2 METER CORD INCLUDED.

SURFACE FINISH

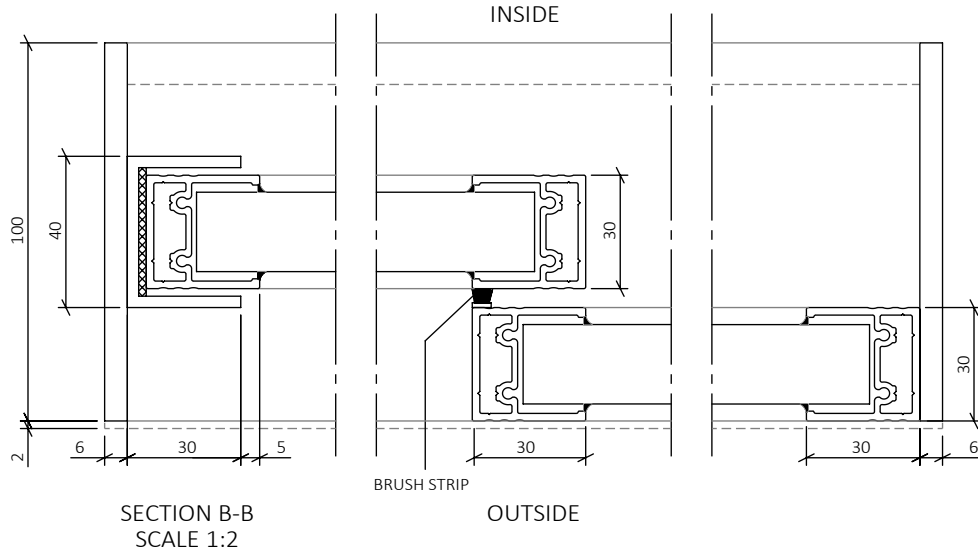
NATURAL ANODIZED ALUMINIUM AS STANDARD. CAN BE PAINTED OR ANODIZED IN OTHER COLOURS (RAL/NCS).

GLASS

D4-12 TEMPERED INSULATING GLASS AS STANDARD (SAFETY GLASS). CUSTOMIZED UP TO 24 MM THICKNESS, DEPENDING ON LOCATION AND REQUIREMENTS.

OPTIONS

AVAILABLE IN DIFFERENT DESIGNS AND IN MANUAL VERSION. PLEASE CONTACT ERGOSAFE FOR FURTHER INFORMATION.



ErgoSafe[®]
FLEXIBLE GLASS SOLUTIONS

www.ergosafe.se

| | |
|--|------------------------------|
| Category ELECTRICALLY OPERATED SLIDING WINDOW | Date 2023-10-30 |
| Description H100 2-PANEL TRANSOM WINDOW | Scale 1:2 (A4) |
| Drawn By EI | Drawing number 20030-0007 |
| | Rev - |